

Science 1206

This Lab write up includes... **Lab #2 - Acceleration**

Title**Purpose**

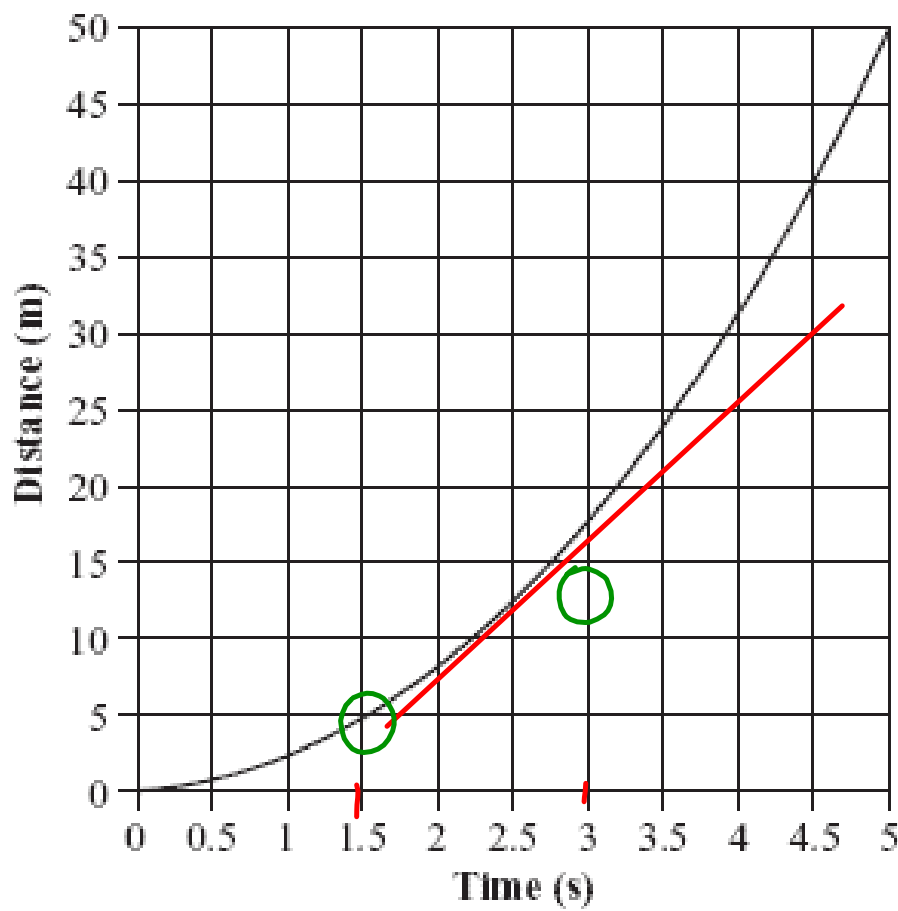
Observations - Table of data

t (s)	d (cm)

Analysis:

- 1) Draw a d vs t graph of your data.
- 2) Draw 2 tangents.
- 3) Calculate the slope of each tangent (these are your instantaneous speeds)
- 4) Draw the speed vs time graph using your speeds in (2)
- 5) Use your speed vs time graph to calculate the acceleration of your cart.

Conclusion**Sources of Error**



instantaneous
speed *

v at 1.5s
= slope

$\Rightarrow \frac{9}{1.5}$
6 m/s
at 1.5s

